

Eaton Micro Data Center

iCube 2.0



Powering Business Worldwide

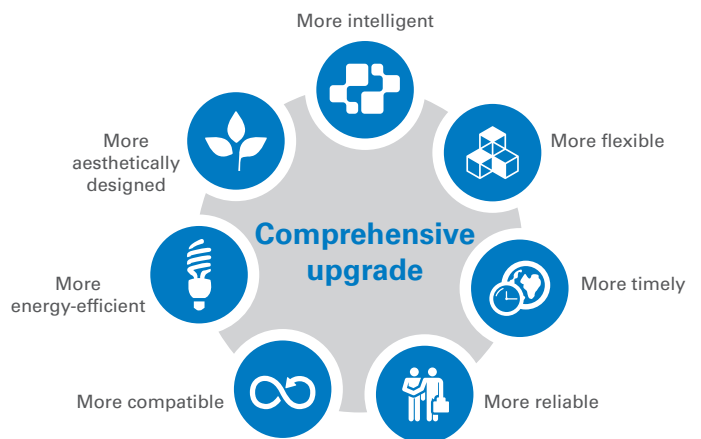


iCube 2.0

Eaton iCube 2.0 seamlessly integrates the physical infrastructure of the computer room and data center to provide an efficient and green integrated solution. The computer room power supply, power distribution, thermal energy management, environmental monitoring, system connection, remote and distributed management are built into one system, providing an integrated solution with high reliability, low energy consumption, easy maintenance, and high scalability.

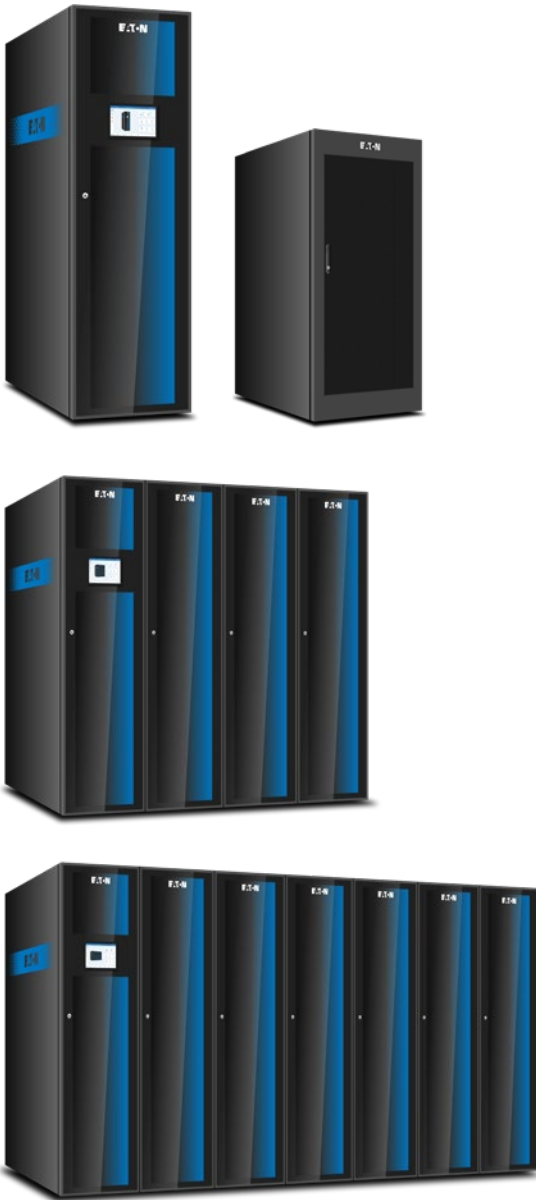
Applications

- Finance, insurance, securities (branches and business nodes)
- Government digital systems, educational and medical institution computer rooms
- Transport, shipping, commercial retail (computer rooms and branch nodes)
- Computer rooms of large-sized enterprise branches and small and medium-sized enterprises
- Telecommunications, 5G computer rooms
- Edge computing



Product Range

Single system 1-7 (8-10 can be customized) cabinet requirements



Product advantages



Time saving

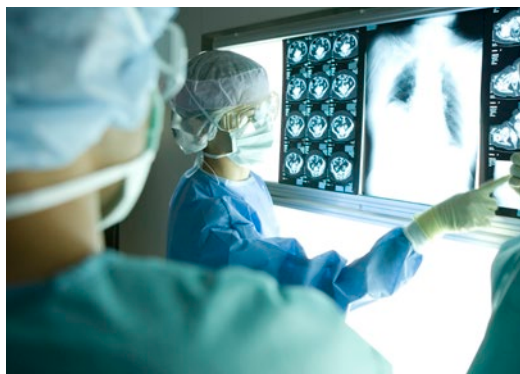
- Standardised configuration with various selections tailored to your needs
- Pre-configuration saves more than 65% time on on-site installation compared to conventional solutions
- 1-hour fast installation for single rack
- Centralised monitoring system with a single interface to easily manage your infrastructure

Cost saving

- Prefabrication and modular construction saves on-site installation cost
- In-rack cooling system eliminates the need for room-level cooling system and cooling loss thus reducing total infrastructure costs
- Saves electricity bills with PUE as low as 1.35
- Unified system saves communication cost

Improved reliability

- Fully enclosed hot and cold aisles, dust and noise reduction
- Smart pop-up door system for temperature control and emergency heat dissipation
- Supports low-load dehumidification which greatly reduces the risk of condensation in the cabinet
- Fully modular design, rack-mounted installation, high scalability
- Industry certified for safe and reliable system operation
- Supports multiple configurations of single unit, N+1 redundancy, 2N redundancy



Comparison with the previous generation

No.	Upgrade item	MDC 1.0	iCube 2.0	Remarks
1	Configuration option	No basic configuration, no installation configuration for non-outdoor unit air conditioner	Add basic non-air conditioning configuration	More configuration, suitable for more applications
2	Channel closure type	Only closed hot and cold aisles, no fully enclosed design for row cabinets	Fully enclosed hot and cold aisles	Reduced dependence on environment, improved system availability and energy saving
3	PUE	Minimum support for row cabinet is 1.5	Minimum support for row cabinet is 1.35	More energy saving, reduced energy consumption by at least 12%
4	UPS option	UPS only supports DXRT 3/6/10/20kVA, no more optional models	Support Eaton 9PX 3/6/11K, 9SX15/20K	More flexible selection and configuration
5	UPS power supply structure	Only single configuration, no redundant design	It can also support UPS parallel operation and redundant configuration	More reliable and flexible selection and configuration
6	Distribution output branch	No redundant branch design	Each configuration is equipped with 1 redundant branch	Improved product usability
7	Smart electric meter	No smart meter option, only basic power distribution function	Standard smart meter (except basic single cabinet configuration)	Improved product usability and intelligence
8	Integrated design of input and output power distribution	The cabinets need to be configured separately for input and output, cannot be integrated and cause wasted space	Integrated input and output power distribution in a box	More trouble-free configuration selection and space-saving
9	PDU option	Support only basic configuration, not smart	Support basic type, network communication type and monitoring type	More flexible, various and intelligent selection and configuration
10	ATS	The user chooses by himself, model is not recommended	Provide factory options	More reliable selection and configuration of factory
11	Battery cabinet	The user chooses by himself, model is not recommended	Provide factory options	More reliable selection and configuration of factory
12	BMS	Not supported	Provide factory options	More reliable selection and configuration of factory
13	EBM	The user chooses by himself, model is not recommended	Provide factory options	More reliable selection and configuration of factory
14	Cooling module option configuration	Air conditioning required	More flexible configuration, non-air conditioning configuration	More flexible and various selection and configuration
15	Cooling capacity option	No 2kW/8.1kW option, support maximum 2 options	Multiple cooling capacity options, 2KW/4.2KW/8.1KW and three 8.1KW unit options, selectable in combination with a 15KW/30KW rack air conditioner	More flexible and rich selection and configuration
16	Unique design of air conditioner	Rack-mounted inter-row air conditioner, not support option without outdoor unit	Rack-mounted inter-row air conditioner, indoor and outdoor integrated design options	Suitable for more special installation applications
17	Monitoring interface	Standard 7-inch LCD screen (resistive screen)	Standard 10.1 inch color touch screen (capacitive screen)	Clearer operation, more process, more sensitive response
18	Mobile operation and maintenance	No mobile phone APP	Support E-mail, mobile APP, SMS alarm	More flexible and convenient operation and maintenance design
19	Dynamic environment monitoring	No video surveillance configuration option	Support temperature and humidity, smoke, flooding, access control monitoring, video monitoring	More comprehensive monitoring solution
20	Emergency plan	Not supported	Standard smart pop-up door	More flexible emergency plan
21	LED lighting	No LED at the front door, no light inside the cabinet	Standard LED in the cabinet	More user-friendly configuration selection
22	Colorful atmosphere lights	No atmosphere light design	Provide standard colorful atmosphere light, support smart color display	More user-friendly and smart configuration selection
23	Cabinet space	Only 600*1400*42U, no other specifications	Support a variety of width, depth and height of cabinet selection	Higher space utilization, supports more flexible space utilization design, and saves unit room floor space
24	Cabinet type compatibility	No 800 wide cabinet option	Support 800 wide network cabinet	Support network cabinet selection, the wiring is more smooth
25	Reliability extension	No support for redundant design, only stand-alone operation	Support UPS or air conditioner parallel/redundant configuration	More reliable and flexible selection and configuration
26	Certification of the whole unit	No certification	Compliant with CE certification	Authoritative certification
27	Cabinet load-bearing standards	Only support 1500 kg	Compliant with 1860KG load-bearing certification test	More stable cabinet strength design
28	Anti-vibration of unit	No seismic test report	Level 8 seismic test	More stable cabinet strength design, suitable for more severe application environment

Common Configuration

	Typical single cabinet configuration			Typical row cabinet configuration		
	Typical configuration 1	Typical configuration 2	Typical configuration 3	Typical configuration 4	Typical configuration 5	Typical configuration 6
Configuration overview	Basic single cabinet	Standard single cabinet	Advanced single cabinet	1+2 row cabinet	1+4 row cabinets	1+6 row cabinet
Unit model (ETN)	EMSRE3K24U	EMSR3K42UA	EMSR6K42U	EMMRS10K1/2	EMMRS20K1/4	EMMRS(2)20K1/6
Recommended load power	1.5kW (Maximum support 2.4kW)	1.7kW	3.5kW	7kW	14kW	21kW
Available space	18U	29U	32U	109U	184U	255U
PUE (optimum value)*	1.09	1.48	1.35			
Channel type	Mesh door	Fully enclosed hot and cold aisles (tempered glass panel at the front door, solid sheet metal panel at the back door)				
Dimensions (W*D*H)	600*1000*1200	600*1200*2000	600*1200*2000	(600*3)*1400*2000	(600*5)*1400*2000	(600*7)*1400*2000
Installation method	Cement floor / Raised floor					
System protection class	IP20	IP50				
Supply and distribution system						
UPS capacity	3kVA/2.7kW @9SX 3kVA/3kW@9PX	3kVA/2.7kW @9SX 3kVA/3kW@9PX	6kVA/6kW @9PX	11kVA/9.9kW @9PX	20kVA/20kW @9SX	20kVA*2/20kW*2 @9SX
UPS efficiency (ETN)	94%	94%	95%	95%	96%	96%
UPS power supply architecture	Single way	Single way	Single way	Single way	Single way	1+1 redundancy: IT load <20kVA Parallel: IT load >20kVA
Distribution output branch	2 way +1 way redundant	2 way +1 way redundant	2 way +1 way redundant	5 way +1 way redundant	9 way +1 way redundant	13 way +1 way redundant
Smart electric meter	/	Standard				
Lightning protection class	CLASSII/C class, In 20kA, I _{max} 40kA, 8/20us					
Total input and output power distribution space	3U	3U	3U	7U	7U	10U
PDU selection	Standard basic type (factory pre-installed); support optional smart type					
PDU interface	12*10A+4*16A	12*10A+4*16A	12*10A+4*16A	20*10A+4*16A	20*10A+4*16A	20*10A+4*16A
PDU type	Standard GB, option IEC	Standard GB, option IEC	Standard GB, option IEC	Standard GB, option IEC	Standard GB, option IEC	Standard GB, option IEC
PDU quantity	Standard configuration: 1 bar/cabinet Optional: 2 bars/cabinet	Standard configuration: 1 bar/cabinet Optional: 2 bars/cabinet	Standard configuration: 1 bar/cabinet Optional: 2 bars/cabinet	Standard configuration: 2 bars /IT cabinet Optional: 1 bar / integrated cabinet	Standard configuration: 2 bars /IT cabinet Optional: 1 bar / integrated cabinet	Standard configuration: 2 bars /IT cabinet Optional: 1 bar / integrated cabinet
ATS	Optional					
Battery cabinet	Optional					
BMS	Optional					
EBM	Optional					
Cooling System						
Cooling method	Natural heat dissipation from the environment	Direct expansion and air cooling				
Rated cooling capacity	/	2kW	4.2kW	8.1kW	8.1kW*2	8.1kW*3

Common Configuration (continued)

	Typical single cabinet configuration			Typical row cabinet configuration		
	Typical configuration 1	Typical configuration 2	Typical configuration 3	Typical configuration 4	Typical configuration 5	Typical configuration 6
Air volume	/	600m³/h	800m³/h	1500m³/h	1500m³/h *2	1500m³/h *3
Refrigeration architecture	/	Standard	Standard	Standard	N+1 redundancy: IT load <=7kW Parallel: IT load >7kW	N+2 redundancy: IT load <=7kW N+1 redundancy: IT load 7-14kW Parallel: IT load >14kW
Air conditioner internal size (H*W*D)	/	303(7U)*438*900	217(5U)*440*760	350(8U)*440*760	350(8U)*440*760 *2	350(8U)*440*760 *3
The refrigerant	/	R410A environment friendly refrigerant	Pre-charged 10M R410A environment-friendly refrigerant			
Unique design of air conditioner	/	Integrated design without outdoor unit, rackmounted	Split design, rack-mounted			
Monitoring system						
Monitoring interface	Remote monitoring	Local 10.1 inch color touch screen				
Monitoring method	Support remote WEB interface access, unified centralized monitoring of multiple nodes					
Mobile operation and maintenance	E-mail, optional: mobile APP, SMS					
Dynamic monitoring	Standard configuration: temperature and humidity, smoke, flooding and access control. Optional: video surveillance					
Emergency plan	NA	Standard smart pop-up door, optional emergency fan				
LED lighting	Standard					
Colorful atmosphere lights	Standard configuration, support smart color display system status					
Extended configuration						
Product development	Support 42U space base	/		Support expansion to 1+1	Support expansion to 1+3 row cabinet and 1+5 row cabinet	Support customization of 1+7, 1+8, 1+9 row cabinet
Cabinet type compatible	Compatible with 800mm wide 19-inch network/server cabinet					
Capacity expansion	6kVA/10kVA		10kVA/20kVA			
Reliability extension	Support UPS redundancy		Support UPS redundancy Support air-conditioning redundancy			
Certification qualification						
Whole machine certification	CE Certification					
UPS certification	CE Certification					
Air conditioner certification	CE Certification					
Load bearing of cabinet	1860kG load-bearing certification test					
Anti-vibration of unit	Level 8 seismic test					

1. Description of PUE test conditions: Based on climatic conditions in Beijing, tested in Eaton laboratory

Typical Configuration 1

	Configuration description	Remarks
UPS selection	3kVA*1 unit	The actual load is about 1-2KW
Air conditioner selection	No air conditioning configuration	Use natural heat dissipation or central air conditioning system of building for heat dissipation
Cabinet selection	600mm*1000mm*1200mm	19-inch half-height server cabinet, total space of 24U, available space of 18U
Sealed airflow	Natural heat dissipation without sealing	Super-durable mesh door design
Monitoring function	UPS, environmental monitoring	Monitoring of UPS operating status, temperature, humidity, smoke, water immersion etc
Configuration characteristics of the whole unit machine	Entry basic configuration, cost-optimized design, meeting the user's low-load and reliable operation, while realizing the needs of unattended and remote management of the entire set of equipment.	



Typical application

- Enterprise network access room
- Network distribution room on a hotel floor
- Conference system and network control cabinet
- Control cabinet at a school broadcasting system

Typical Configuration 2

	Configuration description	Remarks
UPS selection	3kVA*1 unit	The actual load is about 1-2KW
Air conditioner selection	2kW rack air conditioner *1 unit	Integrated design of indoor and outdoor units, no need to install outdoor unit
Cabinet selection	600mm*1200mm*42U	19-inch standard server cabinet with 29U available space
Sealed airflow	Fully enclosed cold and hot airflow	The front door is tempered glass panel, which is convenient to observe the running status in the cabinet; the back door is sheet metal closed panel, which is sturdy and durable
Monitoring function	UPS, air conditioning, environmental monitoring	Monitoring of UPS operating status, temperature, humidity, smoke, water immersion etc
Configuration characteristics of the whole unit	No need to install the outdoor unit for easier and faster installation. Highly integrated design, except for the load equipment, all structures in the cabinet are factory prefabricated and preinstalled which saves on-site installation and improves efficiency	



Typical application

- Glass wall building, no outdoor air conditioning installation space required
- Rental offices for medium and small-sized enterprises
- Temporary and fast-built computer room

Typical Configuration 3

	Configuration description	Remarks
UPS selection	6kVA*1 unit	The actual load is about 3-4kW, reserved capacity for future expansion
Air conditioner selection	4.2kW rack air conditioner *1 unit	Converter design supports automatic regulation of cooling capacity with changes in load
Cabinet selection	600mm*1200mm*42U	19-inch standard server cabinet with 32U available space
Sealed airflow	Fully enclosed cold and hot airflow	The front door is tempered glass panel, which is convenient to observe the running status in the cabinet; the back door is sheet metal closed panel, which is sturdy and durable
Monitoring function	UPS, air conditioning, environmental monitoring	Monitoring of UPS operating status, temperature, humidity, smoke, water immersion etc
Configuration characteristics of the whole unit	Single cabinet integrated design requirements, highly integrated design, and certain reservation for future expansion. Except for the load equipment, all structures in the cabinet are factory prefabricated and pre-installed, which saves on-site installation and improves efficiency	



Typical application

- Information room at a school
- Computer room of a bureau
- Network room at a manufacturing plant
- A social health service facility affiliated to a hospital

Typical Configuration 4

	Configuration description	Remarks
UPS selection	10kVA*1 unit	The actual load is about 6-8KW
Air conditioner selection	8.1kW rack air conditioner *1 unit	Inverter design, supports automatic regulation of cooling capacity with load changes
Cabinet selection	600mm*1400mm*42U*3 units	19-inch standard server cabinet, available 109Uspace (2 IT cabinets + 1 integrated equipment cabinet)
Sealed airflow	Fully enclosed cold and hot airflow	The front door is tempered glass panel, which is convenient to observe the running status in the cabinet; the back door is sheet metal closed panel, which is sturdy and durable
Monitoring function	UPS, air conditioner, environmental monitoring	Monitoring of UPS operating status, temperature, humidity, smoke, water immersion etc
Configuration characteristics of the whole unit	2-3 cabinet design requirements, highly integrated, except for the load equipment, all the structures in the cabinet are factory prefabricated and pre-installed. Only need arrange cabinets for test run, which saves on-site installation and improves efficiency	

Typical application

- Core computer room at a company
- Computer room of a bank branch
- Data room at a school



Typical Configuration 5

	Configuration description	Remarks
UPS selection	20kVA*1 unit	The actual load is about 8-14kW
Air conditioner selection	8.1kW rack air conditioner *2 units	Inverter air conditioner, support parallel or 1+1 redundancy, improve air conditioning system reliability
Cabinet selection	600mm*1400mm*42U*5 units	19-inch standard server cabinet, available 184U space (4 IT cabinets + 1 integrated equipment cabinet)
Sealed airflow	Sealed airflow Fully enclosed cold and hot airflow	The front door is tempered glass door, which is convenient to observe the running status in the cabinet; the back door is sheet metal closed panel, which is sturdy and durable
Monitoring function	UPS, air conditioning, environmental monitoring	Monitoring of UPS operating status, temperature, humidity, smoke, water immersion etc
Configuration characteristics of the whole unit	4-5 cabinet design requirements, except for the load equipment, all structures in the cabinet are factory prefabricated and pre-installed. Only need to arrange cabinets for test run, which saves on-site installation and improves efficiency	

Typical application

- Government computer room
- Laboratory computer room in a university
- Core computer room of a technology company
- Computer room of a bank branch
- Core computer room of a hospital



Typical Configuration 6

	Configuration description	Remarks
UPS selection	20kVA*2 units	The actual load is about 16-22KW, UPS redundant design
Air conditioner selection	8.1kW rack air conditioner *3 units	Inverter air conditioner, 2+1 redundancy, improve the reliability of system refrigeration
Cabinet selection	600mm*1400mm*42U*7 units	19-inch standard server cabinet, available 255U space (6 IT cabinets + 1 integrated equipment cabinet)
Sealed airflow	Fully enclosed cold and hot airflow	The front door is tempered glass panel, which is convenient to observe the running status in the cabinet; the back door is sheet metal closed panel, which is sturdy and durable
Monitoring function	UPS, air conditioning, environmental monitoring	Monitoring of UPS operating status, temperature, humidity, smoke, water immersion etc
Configuration characteristics of the whole unit	6-7 cabinet design requirements, except for the load equipment, all structures in the cabinet are factory prefabricated and pre-installed. Only need to arrange cabinets for test run, which saves on-site installation and improves efficiency	

Typical application

- Government core computer room
- Computer room at a scientific research laboratory
- Core computer room at a technology company
- Computer room of a bank branch
- Core computer room of a 3A hospital



Product Model

Product number	Product description	Monitoring host	Row cabinet (Width *Depth*Height MM)	Air conditioner	
EMSRE3K24U	Eaton 3K24U basic single cabinet	1U monitoring host, no local display	24U mesh door cabinet	600*1000*1200	–
EMSRE6K24U	Eaton 6K24U basic single cabinet	1U monitoring host, no local display	24U mesh door cabinet	600*1000*1200	–
EMSRE3K42U	Eaton 3K42U basic single cabinet	1U monitoring host, no local display	42U mesh door cabinet	600*1200*2000	–
EMSRE6K42U	Eaton 6K42U basic single cabinet	1U monitoring host, no local display	42U mesh door cabinet	600*1200*2000	–
EMSRS3K42UA	Eaton 3K42U standard single cabinet	Monitoring host integrated with local display (4G+ SMS modem version monitoring host needs to be added)	42U glass door cabinet	600*1200*2000	2KW integrated air conditioner
EMSRS6K42U	Eaton 6K42U standard single cabinet	Monitoring host integrated with local display (4G+ SMS modem version monitoring host needs to be added)	42U glass door cabinet	600*1200*2000	4.2KW split air conditioner
EMSRS10K42U	Eaton 10K42U standard single cabinet	Monitoring host integrated with local display (4G+ SMS modem version monitoring host needs to be added)	42U glass door cabinet	600*1200*2000	4.2KW split air conditioner
EMMRS10K1/2	Eaton 1+2 10K row cabinet	Monitoring host integrated with local display (4G+ SMS modem version monitoring host needs to be added)	3*42U glass door cabinet	600*3*1400*2000	8.1KW split air conditioner
EMMRS(2)10K1/2	Eaton 1+2 double 10K row cabinets	Monitoring host integrated with local display (4G+ SMS modem version monitoring host needs to be added)	3*42U glass door cabinet	600*3*1400*2000	8.1KW split air conditioner
EMMRS20K1/4	Eaton 1+4 20K row cabinet	Monitoring host integrated with local display (4G+ SMS modem version monitoring host needs to be added)	5*42U glass door cabinet	600*5*1400*2000	2 * 8.1KW split air conditioner
EMMRS(2)20K1/4	Eaton 1+4 double 20K row cabinet	Monitoring host integrated with local display (4G+ SMS modem version monitoring host needs to be added)	5*42U glass door cabinet	600*5*1400*2000	2 * 8.1KW split air conditioner
EMMRS20K1/6	Eaton 1+6 20K row cabinet	Monitoring host integrated with local display (4G+ SMS modem version monitoring host needs to be added)	7*42U glass door cabinet	600*7*1400*2000	2 * 8.1KW split air conditioner
EMMRS(2)20K1/6	Eaton 1+6 double 20K row cabinet	Monitoring host integrated with local display (4G+ SMS modem version monitoring host needs to be added)	7*42U glass door cabinet	600*7*1400*2000	3 * 8.1KW split air conditioner

Product Model (continued)

Product number	Product description	UPS	PDU	Smoke detector	Water sensor	Temperature and humidity sensor
EMSRE3K24U	Eaton 3K24U basic single cabinet	9SX3000IR	Standard configuration with 1 basic national standard output socket PDU, 12*10A+4*16A output, 32A input	Standard *1	Point type *1	Standard *1
EMSRE3K42U	Eaton 3K42U basic single cabinet	9SX3000IR	Standard configuration with 1 basic national standard output socket PDU, 20*10A+4*16A output , 32 A input	Standard *1	Point type *1	Standard *1
EMSRS3K42UA	Eaton 3K42U standard single cabinet	9SX3000IR	Standard configuration with 1 basic national standard output socket PDU, 20*10A+4*16A output , 32 A input	Standard *1	Rope type *1	Standard *1
EMMRS20K1/4	Eaton 1+4 20K row cabinet	9SX20KPMCH	Standard configuration with 9 basic national standard output socket PDU (integrated cabinet with 1 bar, IT cabinet with 2 bars/cabinet), 20*10A+4*16A output, 32 A input	Standard *2	Rope type *1	Standard *5
EMMRS(2)20K1/4	Eaton 1+4 double 20K row cabinet	2*9SX20KPMCH	Standard configuration 9 basic national standard output sockets PDU (integrated cabinet with 1 bar, IT cabinet 2 bars/cabinet), 20*10A+4*16A output, 32 A input	Standard *2	Rope type *1	Standard *5
EMMRS20K1/6	Eaton 1+6 20K row cabinet	9SX20KPMCH	Standard configuration 13 basic national standard output sockets PDU (1 integrated cabinet, 2 IT cabinets/cabinet), 20*10A+4*16A output, 32 A input	Standard *2	Rope type *1	Standard *7
EMMRS(2)20K1/6	Eaton 1+6 double 20K row cabinet	2*9SX20KPMCH	Standard configuration with 13 basic national standard output sockets PDU (1 integrated cabinet, 2 IT cabinets/cabinet), output 20*10A+4*16A, 32 A input	Standard *2	Rope type *1	Standard *7

Optional accessories

S/N	Product number	Product description
UPS	EMUPS9SX3K	9SX3K+Genepi FA-ETN
UPS	EMUPS9PX3K	9PX3K+Genepi FA-ETN
UPS	EMUPS9PX6K	9PX6K+Genepi FA-ETN
UPS	EMUPS9PX11K	9PX11K+Genepi FA-ETN(3:1)
UPS	9SX15KPMCH	9SX15K (with Modbus port) (Default 3:3)
UPS	9SX20KPMCH	9SX20K (with Modbus port) (Default 3:3)
Air conditioner	EMA/CICUE02A	2KW (rack-mounted) integrated air conditioner
Air conditioner	EMA/CICUE04S	4.2 KW (rack-mounted) split air-cooled air conditioner, internal unit
Air conditioner	EMA/COCUEW06	4.2 KW (rack-mounted) split air-cooled air conditioner, external unit
Air conditioner	EMA/CICUE08S	8.1 KW (rack-mounted) split air-cooled air conditioner, internal unit
Air conditioner	EMA/COCUEW10	8.1 KW (rack-mounted) split air-cooled air conditioner, external unit
Air conditioner	COASW03DWZJH	Cryogenic components of split unit
Air conditioner	COASL108	Manual operator
Air conditioner	SLCNM-9(52270171)	4.2KW/8.1KW split air conditioner water pump
Air conditioner	SSP-MDC EK PUMP ACMC-BP04	Components of split air conditioner water pump
Monitor	EMCMMVIEW	Monitoring module (without LCD display 1U module, for mesh cabinet)
Monitor	EMCMMVIEWS	Monitoring module (including LCD display, for glass cabinet)
Monitor	EMMONITOR	Monitoring module (including LCD display, glass cabinet, including wifi module, SMS modem, excluding mobile phone card)
Cabinet	SMRACK24UM	24U mesh -SR
Cabinet	SMRACK42UM	42U mesh -SR
Cabinet	SR-42800-MESH	42U mesh -SR-800 wide
Cabinet	EMRACK42UGA	42U glass -SR- integrated air conditioner
Cabinet	EMRACK42UG	42U Glass -SR- Split Air Conditioner
Cabinet	EMRACK42UGL	42U glass -MR- main cabinet
Cabinet	EMRACK42UGIT	42U glass -MR-IT cabinet -600 wide
Cabinet	EMR-42800-GLASS-IT	42U glass -MR- network cabinet -800 wide
Cabinet	SMCAABP	Blind plate kit 15pcs 1U
Cabinet	SMCAASP	Tray
Cabinet	SR/MR-L Rail	1 pair of L-shaped guide rails
Switchboard	EMPDM6K	PDME-6K- No smart meter
Switchboard	EMPDM6K	PDM-6K with smart meter
Switchboard	EMPDM10K	PDM-10K with smart meter
Switchboard	EMPDM(2)10K	PDM-2X10K (redundant) with smart meter
Switchboard	EMPDM20K31	PDM-20K(3/1) with smart meter
Switchboard	EMPDM20K33	PDM-20K(3/3) with smart meter
Switchboard	EMPDM(2)20K31	PDM-2X20K (redundant 3/1) with smart meter
Switchboard	EMPDM(2)20K33	PDM-2X20K (redundant 3/3) with smart meter
PDU	EMPDU16GBB15	Basic type "16 ports" 32A" 12*10A+4*16A"GB" cable length L=1.5M, top cable entry, common round terminal
PDU	EMPDU16IECB15	Basic type "16 ports" 32A" 12*10A+4*16A" IEC13 C19" cable length L=1.5M, top cable entry, common round terminal
PDU	EMPDU24GBB25	PDU EMPDU24GBB25 Basic type "24 ports" 32A" 20*10A+4*16A "GB" cable length L=2.5M, top cable entry, common round terminal

S/N	Product number	Product description
PDU	EMPDU24IECB25	Basic type "24 ports" 32A" 20*10A+4*16A" IEC13 C19" cable length L=2.5M, top cable entry, common cylindrical terminal
PDU	EMPDU24GBB50	Basic type "24 ports" 32A" 20*10A+4*16A" "GB" cable length L=5M, top cable entry, common round terminal
PDU	EMPDU24IECB50	Basic type "24 ports" 32A" 20*10A+4*16A" IEC13 C19" cable length L=5M, top cable entry, common round terminal
PDU	EMPDU24GBB70	Basic type "24 ports" 32A" 20*10A+4*16A" "GB" cable length L=7M, top cable entry, with common round terminal
PDU	EMPDU24IECB70	Basic type "24 ports" 32A" 20*10A+4*16A" IEC13 C19" cable length L=7M, top cable entry, with common round terminal
PDU	EMPDU24GBMB25	Monitoring type "24 ports" 32A" 20*10A+4*16A" "GB" with branch circuit monitoring, no control, cable length L=2.5M, top cable entry, common cylindrical terminal
PDU	EMPDU24IECMB25	Monitoring type "24 ports" 32A" 20*10A+4*16A" IEC13 C19" with branch circuit monitoring, no control, cable length L=2.5M, top cable entry, common cylindrical terminal
PDU	EMPDU24GBMB50	Monitoring type "24 ports" 32A" 20*10A+4*16A" "GB" with branch monitoring, no control, cable length L=5M, top cable entry, common cylindrical terminal
PDU	EMPDU24IECMB50	Monitoring type "24 ports" 32A" 20*10A+4*16A" IEC13 C19" with branch monitoring, no control, cable length L=5M, top cable entry, common cylindrical terminal
PDU	EMPDU24GBMB70	Monitoring type "24 ports" 32A" 20*10A+4*16A" "GB" with branch monitoring, no control, cable length L=7M, top cable entry, common cylindrical terminal
PDU	EMPDU24IECMB70	Monitoring type "24 ports" 32A" 20*10A+4*16A" IEC13 C19" with branch circuit monitoring, no control, cable length L=7M, top cable entry, common cylindrical terminal
PDU	EMPDU24GBMD25	Monitoring + control type "24 ports" 32A" 20*10A+4*16A" "GB" with branch monitoring, branch circuit close and open control, cable length L=2.5M, top cable entry, common cylindrical terminal
PDU	EMPDU24IECMD25	Monitoring + control type "24 ports" 32A" 20*10A+4*16A" IEC13 C19" with branch monitoring, branch circuit close and open control, cable length L=2.5M, top cable entry, common cylindrical terminal
PDU	EMPDU24GBMD50	Monitoring + control type "24 ports" 32A" 20*10A+4*16A" "GB" with branch monitoring, branch circuit close and open control, cable length L=5M, top cable entry, common cylindrical terminal
PDU	EMPDU24IECMD50	Monitoring + control type "24 ports" 32A" 20*10A+4*16A" IEC13 C19" with branch monitoring, and controlling branch on and off, cable length L=5M, Top cable entry, common cylindrical terminal
PDU	EMPDU24GBMD70	Monitoring + control type "24 ports" 32A" 20*10A+4*16A" "GB" with branch monitoring, branch circuit close and open control, cable length L=7M, top cable entry, common cylindrical terminal
PDU	EMPDU24IECMD70	Monitoring + control type "24 ports" 32A" 20*10A+4*16A" IEC13 C19" with branch monitoring, branch circuit close and open control, cable length L=7M, top cable entry, common cylindrical terminal
Sensor	MDC-T/H-NOSCREEN	Temperature and humidity sensor (without display)
Sensor	SMWATER	Water immersion sensor (rope type) --- for air-conditioning cabinet
Sensor	MDC-WATER-POINT	Water immersion sensor (point type) --- for mesh cabinet
Sensor	SMSMOKE	Smoke detector ---1pc/1-4 cabinets, 2pcs/5-7 cabinets
Sound and light alarm	MDC-ALARM	Sound and light alarm
Video Surveillance	MDC-CAMERA	Webcam
Video Surveillance	MDC-NVR-8	NVR (Network Video Recorder)
Video Surveillance	MDC-2T-HD	Hard disk 2T
Network switch	MDC-NSWITCH-8	Network switch
Battery Management	MDC-CM-03N	Convergence module (CM-03N)
Battery Management	MDC-H3G-TL-12	TL module (H3G-TL-12)
Battery Management	MDC-TC-500	TC module (TC-500)
Battery Management	MDC-JCE500-EKS	Current transformer 500A
ATS	EATS16N	STS 16 Netpack
Monitoring software	EMDC-CM-PC	Centralized monitoring software
Monitoring software	EMDC-SM-APP	Mobile APP single cabinet version
Monitoring software	EMDC-CM-APP	Mobile APP centralized monitoring version



Eaton Electric (Singapore) Pte Ltd
100G Pasir Panjang Road
#07-08 Interlocal Centre
Singapore 118523
Eaton.com/SG

© 2021 Eaton
All Rights Reserved
BR.MDC2.0.SG.0321
March 2021

Eaton is a registered trademark of Eaton Corporation.

All other trademarks are property of their respective owners.



Follow us on social media to get the latest product and support information.

